



## in-slab heating

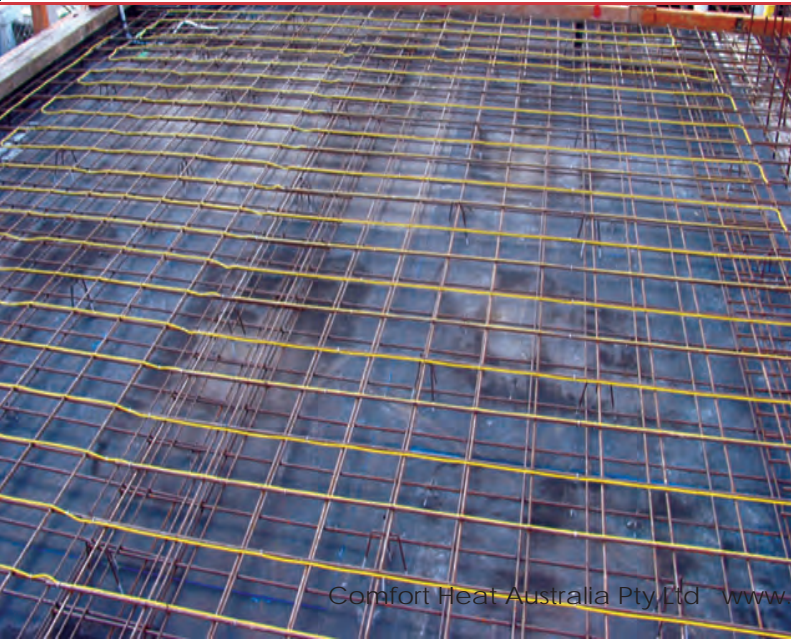
The In-slab heating cable is a single conductor heating cable used for In-slab heating applications. In-slab heating is suitable for large areas and is generally connected to off-peak electricity, using the concrete slab for heat storage. In-slab has a slow response time and will take between 10-24hrs to heat up, depending on slab thickness.

The In-slab cable has a nominal heat output of 160W/m<sup>2</sup> @ 200mm spacing and is available in pre-determined lengths with cold tails.

The construction of the cable is designed to meet the demanding requirements of In-slab heating. The In-slab cable is a flexible double insulated cable which avoids installation damage ie. kinks & tight bends. The cable is a multi-stranded conductor with kevlar core, giving superior tensile cable strength to prevent cable failure due to slab movement.



Cable Type:	Single conductor heating cable with earth screen
Construction:	Multi-stranded heating wire with double insulation, earth screen & sheath
Insulation Rating:	4000 V
Rated Voltage:	230 Volt AC
Rated output:	30W/m
Cold Tail Length:	3.5 metre with splice connection
Cable Diameter:	5mm
Cable Standard:	IEC800 Class II
Warranty:	10 years



### ELECTRICAL LOADS & SIZES

DESCRIPTION	LENGTH	WATTS
SMC-S29	29m	850W
SMC-S38	38m	1100W
SMC-S47	47m	1400W
SMC-S57	57m	1700W
SMC-S67	67m	2000W
SMC-S75	75m	2250W
SMC-S84	84m	2500W
SMC-S94	94m	2800W
SMC-S112	112m	3350W
SMC-S134	134m	4000W
SMC-S150	150m	4500W
SMC-S168	168m	5000W